



## Multi-Use Net-Zero CLU Building "1/9 One-Plex"

### QUALIFICATIONS

POC: Bill Guglielmo  
Modula S Inc  
PO Box 1416, Sun Valley, ID 83353  
410-430-2566 billg@itlsolutions.com

### Experienced Team

- Winner of the 2015 Ebola Grand Challenge USAID, CDC & DoD
- Booz Allen Hamilton Engineering Services
- Lawrence Livermore National Laboratory
- Idaho National Laboratory
- ARUP Engineers



### CONTRIBUTION TO THE REQUIREMENT

#### Relevance to Military Systems:

- The building envelope is simply a "Better Thermal Box" which accommodates all uses
- 7x Improved Thermal Efficiency
- R-60 Thin Panel Super-Insulation
- 4x Improved HVAC
- 100% PV Solar Microgrid & Battery Storage
- Building Integrated Force Protection
- .50 Cal Armor Piercing Round & RPG Resistant
- Transportable, Autonomous & Resilient
- Anti-bacterial "CuVerro" Bathrooms
- Building Code & UFC 10201-01 Compliant

### ADVANTAGES

#### Logistics:

- "Off the Grid" Autonomous Operations
- Zero Liquid Fuel Use

#### Deployable:

- Half the Time to Construct
- Pre-Designed Buildings

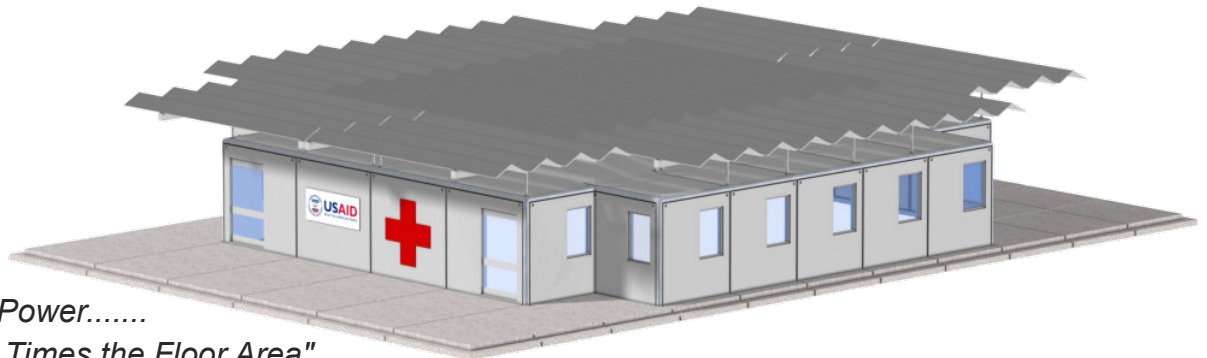
#### Lifecycle:

- 3x Longer Life, 25 Years
- 50% Lifecycle Cost Savings

#### Cost:

- Competitive with Existing Bases
- Buy, Lease & ESPC Options

## Open Plan Design



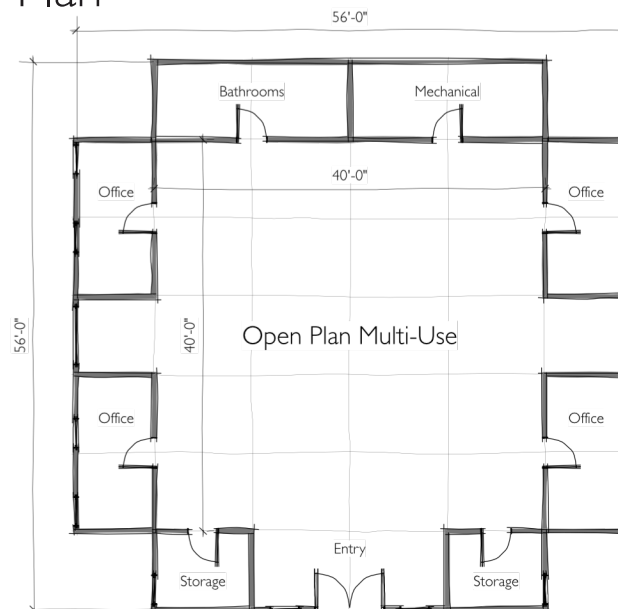
*"One Quarter the Power....."*

*.....Seven Times the Floor Area"*

## Specification

- Four 40' ISO Containers w/ Super Insulated Panel System
- Five 40' ISO Flat Floor/Ceiling Panels w/ Super Insulated Panel System
- "Healthy Building" Anti-bacterial CuVerro Surfaces & Fixtures
- Groundsource Geothermal Heat Pump, Variable Refrigerant Flow HVAC
- Solar Shade & PV Panel System w/ Battery Storage
- Mission Packages
  - 1 Entrance Unit
  - 2 Office Units
  - 5 Open Plan High Ceiling Office Units
  - 1 Anti-bacterial CuVerro Bathroom & Mechanical Unit

## Open Plan



## Entrance View



## Sales



Modula S buildings and subcomponents may be ordered, today, in a FAR compliant process with the support of the National Security Technology Accelerator ([www.NSTXL.org](http://www.NSTXL.org)). NSTXL's other transaction authority (OTA), up to \$100 million, may be deployed at any point in the budget period. The process can be completed quickly and buildings may be delivered and deployed within months of the order.